

Phthaloylchloride Series

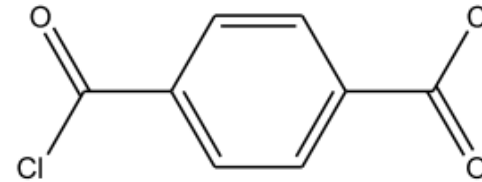
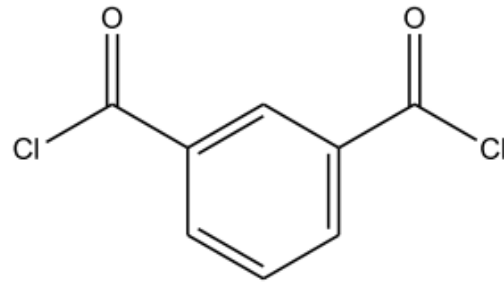
1. Characteristics of Product

Phthaloyl chloride is refined to be highly pure. They are crystal white solids at room temperature. It is as clean and transparent as water when it is in its liquid state. They are divided into two different grades depending on isomers.

IPC: Highly pure isophthaloyl chloride. The meta-aramid resin, which is its main application area, is ultra heat-resistant, meaning that it can characteristically resist very high temperature. It can be applied for fire-proof clothing and industrial bearings.

TPC: Highly pure terephthaloyl chloride. The para-aramid resin, which is its main application area, has a good mechanical strength. It is used for fire-proof clothing, space equipment, and optical cables.

2. Chemical Structure



3. Specifications

Product Name	IPC	TPC
Purity(%)	Min. 99.90	White crystals
TPC or IPC(%)	Max. 0.05	Max. 0.05
Other Impurity(%)	Max. 0.10	Max. 0.10

4. Applications

Bag filters, hoses, fire-proof clothing, bearings, bullet-proof clothing, speakers, and diaphragms



5. Handling and Storage

The products of phthaloyl chloride series react with air moisture, generating phthalic acid and HCl gas. For storing and using it, completely seal to avoid any contact. At room temperature, it is seal it is in a solid state. So, heating at 60–70°C in case of IPC, and at 90–100°C in case of TPC is required while mixing and melting.

6. Safety and Health

If it comes in contact with skin, it would be dangerous and possibly cause severe burn. If it comes in contact with the eyes, it may cause injury. If it is inhaled, it would be toxic. Handle it outdoors or in a well-ventilated area. If it comes in contact with skin, immediately wash it with plenty of water. If a person inhaled it, the person should be moved to an area with fresh air and placed into a position that would make breathing easier before taking him/her to a medical institution for examination.

7. Product Packaging

Supply in bulk